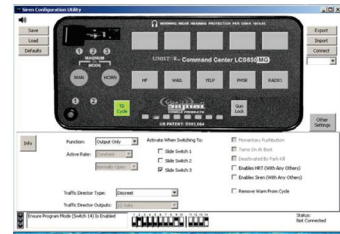


LCS850MG12

STAR
Safety Technologies by *Crote*



LCS850MG12



FEATURES & BENEFITS

- Over 50 programmable options
- Combines a premium full feature, dual tone output, 200 watt siren with an 18 output light and Traffic Director control system
- Optional USB Windows interface helps you configure and save options for later use (Buttons, Audio, slide switch, Park Kill, Traffic Director, Steering wheel horn function)
- Wail, Yelp, Phaser, Two-tone, Manual, and Air Horn (or quick shot air horn)
- Integrated PA microphone with user adjustable volume at control head
- Euro style connectors allow for quick and easy installation
- Dual color back lighting on keypad (Green and Red)
- Built in horn ring transfer (HRT)
- Dual 100 watt outputs (200 watts total)
- 10 outputs, fused at 20 amps each
- Flange or flush mount
- LED diagnostics: Speaker drivers active, over/under voltage, speaker shortage, and Park Kill active Designed to allow the end user many possible configurations while allowing for a simple and reliable install
- Fully programmable gun lock options including button, timer, and password
- Ships complete with 8' of color coded wire for the audio control, 2' of 8 awg power wires, 25' communication cable, instruction manual, screw lock connectors, mic. clip, mounting bracket, and mounting hardware
- 0mA standby current, will not drain the battery
- Over/under voltage and reverse polarity protection
- Independently fused outputs
- Dimensions: Amp - 2¹/₈"H x 7⁵/₈"W x 9⁷/₈"D, Control head with flange: 4¹/₆₄"H x 7¹/₁₆"W x 7⁷/₈"D, Control head without flange: 3³/₁₆"H x 6¹/₁₆"W x 7⁷/₈"D
- Input: 10-16V DC
- Amp Draw: 8 amps per speaker
- Approvals: Exceed the accoustical requirements of SAE J1849 and California Title 13 when used with SVP drivers and approved audio tones

I/O LINES ARE RFI PROTECTED

- Large input filter capacitor eliminates RFI
- Customizable user interface
- Magnetically isolated radio repeat input
- Self resetting circuit protection against speaker shorts

PART	DESCRIPTION
LCS850MG-F12	Unistar Command Center, 200 watt siren with flange
LCS850MG-12	Unistar Command Center, 200 watt siren with no flange

 **Warning:** Cancer and Reproductive Harm - www.P65Warnings.ca.gov

SF010 Rev-C 05-11-2023



**FOR MORE INFORMATION
VISIT OUR WEBSITE.
STARSAFETYTECHNOLOGIES.COM**

Star Safety Technologies, LLC
455 Rochester St., Avon, NY 14414
Phone: 585-226-9500 | Fax: 888-478-2797

STAR
Safety Technologies by *Crote*

LCS850MG12

The USB Windows interface helps you configure and save for options later use options such as:

Buttons	Normally open/closed, on at power up, latched/momentary, gun lock, security gun lock, flashing
Audio	Air Horn and PA only mode, programmable user lock out, disable Phaser, select alternate tones
Slide Switch	Any siren tone, Traffic Director, and or output can be programmed to come on with any slide switch position, progressive or not
Park Kill	Deactivates audio or selected lights
Traffic Director	Programmable to work with most Traffic Directors
Steering Wheel Horn Function	Programmable HRT activation, Air Horn, Manual ramp down, manual ramp and stop

LCS850MG12 Specifications and Features

Control Head	Remote mount user interface is only 1 1/8" thick, wired up via single modular jack, user interface features a 14 button programmable, dual color lighted keypad with user selectable label inserts, 4 position slide switch with LED indicators, 8 LED Traffic Director function indicator, status indicator LEDs, slide switch provides three programmable functions for the quick control of a full featured light bar or other devices, can be heard loud and clear with the attached noise cancelling PA microphone, volume adjustable from the control head
LCS Amplifier	Outfitted with 20 amp screw lock Euro connectors for easy and secure install, main power is run through a three terminal screw down Euro block capable of accepting up to 8 awg wires, fuses and option switches are easily accessible by loosening two access plate screws, three basic functions (dual-tone amplifier, Traffic Director, lighting outputs)
Dual-Tone Siren Amplifier	Two independent 100 watt siren amplifiers in a single box, provides both redundancy and an extremely intimidating sound, makes a single car sound like a whole fleet, programmable siren tones
Traffic Director	Programmed either control an 8 or 6 wire ground switch, Traffic Director or logic controlled Traffic Director, compatible with all leading brands of logic controlled Traffic Directors (2 or 4 wire positive and negative slide switch)
Lighting Output	Ten fused amp lighting outputs
External Triggers	Four programmable inputs (Auxiliary, Park Kill, Gun Lock, Night mode/DIM, positive or negative switching for Auxiliary and Park Kill)

